

INFORMATION MANAGEMENT WEB PROCESS WEDDING BUILDING RENTAL

**Dwi Sukma Donoriyanto¹, Rus Indiyanto², Rana Atikah Ardlianti³, Siswanto Moenandar⁴,
Nanik Ratni Juliardi A.R⁵, Yuliatin Ali Syamsiah⁶**

^{1,2,3,4,5,6}Faculty of Engineering, Universitas Pembangunan Nasional Veteran Jawa Timur
Jl. Rungkut Madya Surabaya 60294

dwisukama.ti@upnjatim.ac.id¹, rusindiyanto.ti@upnjatim.ac.id², ranaardlianti98@gmail.com³,
siswantomoenandar@gmail.com⁴, nanik_rjar@upnjatim.ac.id⁵

ABSTRACT

In this modern era, convenience is what makes competition in the building rental business increase. Therefore, every business actor is required to have a good management information system. One way to make a good system is to implement it in web form. *Yutanila* Wedding is a wedding hall rental service. This study aims to create a web-based building rental management information system. The research was conducted from designing databases to web hosting processes using Power Designer, Xamp, and Dreamweaver software. From the research results, we get a website for renting wedding halls that is used for the building rental process. The web contains how the login process, data input, and output data are generated. Thus, the web can be used by the public with the available web links.

Keywords: Crane Girder, Heuristics, Line Balancing, and Optimization.

MANAJEMEN INFORMASI PROSES PEMBUATAN WEB PENYEWAAN GEDUNG PERNIKAHAN

ABSTRAK

Pada era modern seperti sekarang tidak terlepas dengan kemudahan yang membuat persaingan di bidang usaha persewaan gedung menjadi meningkat. Oleh karena itu, setiap pelaku usaha di tuntut untuk mempunyai system informasi manajemen yang baik. Salah satu cara untuk membuat system yang baik yaitu dengan di implementasikan dalam bentuk web, Yutanila Wedding adalah jasa penyewaan gedung pernikahan. Penelitian ini bertujuan unuk membuat web dengan menggunakan software Power Designer, Xamp dan Dreamweaver. Dari hasil penelitian yang didapatkan web penyewaan gedung pernikahan yang digunakan untuk proses penyewaan gedung. Web tersebut berisi tentang bagaimana proses login, input data dan output data yang dihasilkan. Sehingga web tersebut dapat digunakan untuk umum dengan link web yang tersedia.

Kata-kata Kunci: Crane Girder, Heuristik, Line Balancing, dan Optimasi.

Korespondensi: Dwi Sukma Donoriyanto, Faculty of Engineering, Universitas Pembangunan Nasional Veteran Jawa Timur, Jl. Rungkut Madya Surabaya 60294. Email: dwisukama.ti@upnjatim.ac.id

Submitted: January 2023, **Accepted:** February 2023, **Published:** March 2023

ISSN: 1412 - 3681 (printed), ISSN: 2442 - 4617 (online), Website: <http://journal.feb.unpad.ac.id/index.php/jbm>

INTRODUCTION

The industrial world always connects our thoughts to an input, process, or output procedure. Data is an input that will eventually become information through a management system process commonly called a database management system (DBMS) (Dilling, 2020; Simanjuntak et al., 2017). Data is easy to get, however, information is difficult to find. The process of converting data into information needs to go through a system that has high complexity. The management information system (MIS) is the main device for printing information for decision-making and company development (Han & Hu, 2021; Suman et al., 2022).

Yutanila Wedding is a wedding hall rental service. *Yutanila* wedding needs information to recap or make a report on renting a wedding hall. This management information system is needed to run the building leasing process (Yudiyana et al., 2018). Without a management information system, *yutanila* wedding cannot determine policies and decisions to support the improvement or development of building rentals. Therefore, the *yutanila* building needs to have an information system specifically for leasing administration. This is necessary to form a more profitable process for *yutanila* wedding.

Some building rentals still use manual library information systems in recording and reporting. This manual building rental system has an impact on the inability of tenant services to provide fast service, considering the many

tenants to be served and the inability to process data into the information needed. The unavailability of further information will hamper *Yutanila* Wedding in carrying out other functions, such as planning promotional and preventive activities.

To create a wedding hall rental management information system, it will be implemented as a web form. This aims to simplify the process of renting a wedding hall. The creation of this system begins with creating a database design by making erd, cdm, and pdm. Then the web creation process is carried out and hosted on the domain that is owned.

LITERATURE REVIEW

According to Hooper & Page (1997) “an information system is the sum of all the tools, techniques, and procedures used by a business to process data. It is important to note that, for any organization to function and perform very well there must be timely, relevant information, accurate, relevant, and unambiguous behind it. According to Lucey (2005) “SIM is a system that transforms data from internal and external sources into information and communicates that information in an appropriate form to managers at all levels in all functions to enable them to make timely and effective decisions” (Gabriel, 2017).

MySQL is a Relational Database Management System (RDBMS) that is distributed free under the GPL (General Public

License). Where everyone is free to use MySQL, but may not make it a closed-source or commercial derivative product (Nugraha, 2021). A relational database structure, such as MySQL, can be formed by determining the entities involved in the system and the relationships that connect one entity to other entities (Sudiartha et al., 2020).

ERD is a data modelling technique that describes and expresses a relationship in a diagram/model (Faqihuddin et al. 2020). Data modelling is the process of developing models for designing and developing data systems that support various organizational business processes (El Alami & Bahaj, 2018). The Physical Data Model or commonly called PDM is a physical representation of the database that will be created by considering the DBMS that will be used. PDM can be generated from CDM. PDM in its application can be equated with Relation Scheme whose function is to model the physical structure of a database (Mukaromah et al., 2020).

phpMyAdmin is free software written in PHP, meant to handle the administration of MySQL over the Web. phpMyAdmin supports various operations in MySQL (Utami et al., 2022; Wibowo & Priandika, 2021). Frequently used operations (managing databases, tables, columns, relations, indexes, users, permissions, etc.) can be performed through the user interface, while still having the ability to execute SQL statements directly. Everyone is possible to use

phpMyAdmin which is made for easy (initial) English practice course (Boonyopakorn, 2017).

Adobe Dreamweaver is used to create graphical user interfaces and to write project code. The system is operated using MySQL Server which acts as a database, and the system interface is designed using Adobe Dream Weaver CS5 software (Abas et al., 2017). Hosting services, both free and paid, have been available to individuals for years, and it looks like they are here to stay. What has changed is the quality and range, to a certain extent, due to increased competition and user expectations. Despite increasing availability and decreasing prices for paid hosting services, the market still has free host space (Krol & Zdonek, 2022).

METHODS

The research methodology begins with identifying the problems that exist in the *Yutanila* Wedding. After that, there were problems, namely the manual rental process and a messy management information system.

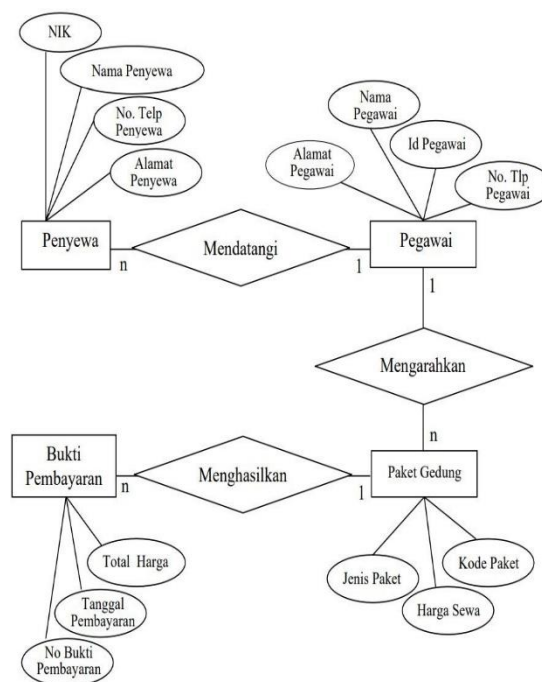
The creation of a wedding hall rental management information system begins with the database design process, which starts with creating entity relationship diagrams (ERD), conceptual data models (CDM), and physical data models (pdm) which are created using Power Designer software. With the entities created namely tenants, employees, building packages, and proof of payment (Al-Fedaghi, 2021).

In the next stage, the results of the database design will be transferred to the phpMyadmin local host using the XAMP software. After the transfer process is successful, the database will be used for the web creation process using Dreamweaver software. Making a web with Dreamweaver is designed to ease the process of renting a building by creating a login page, a data input page, and a data output page (Wong et al., 2022; Young-Harry et al., 2018).

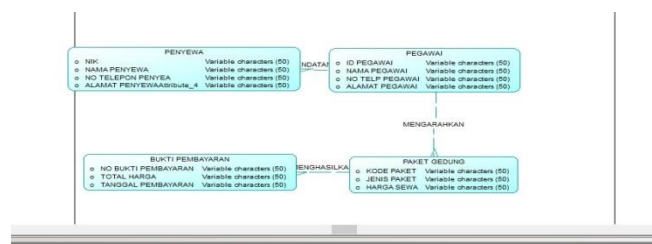
After the web creation with Dreamweaver software is complete, the web hosting process will be carried out. The web hosting process is done with a free domain provided by web hosting. After the web hosting process is complete, you will have a website that can be accessed online by anyone who can log in with their username and password.

RESULTS AND DISCUSSION

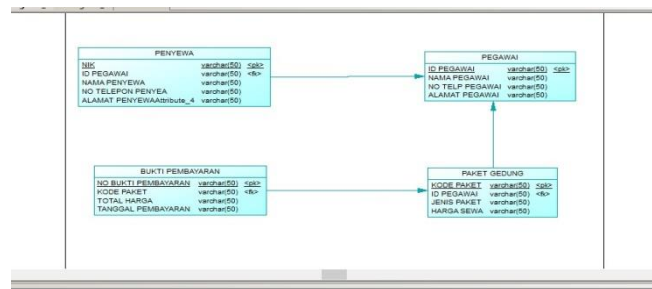
a. ERD, CDM, PDM, and DFD



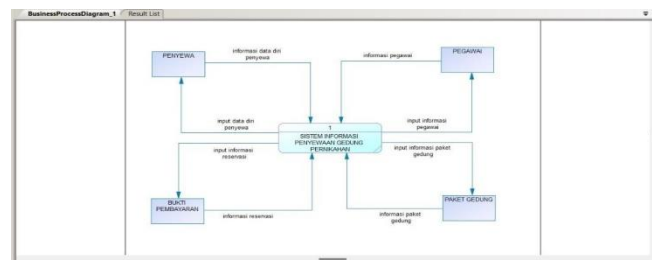
Picture 1. ERD



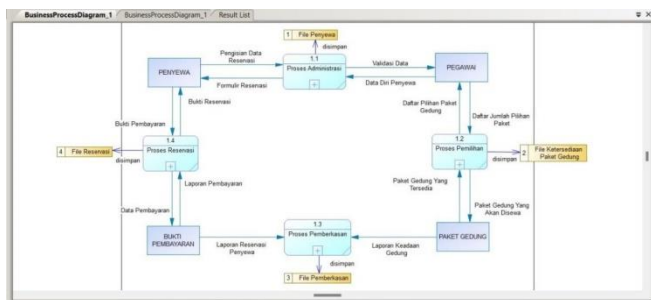
Picture 2. CDM



Picture. PDM



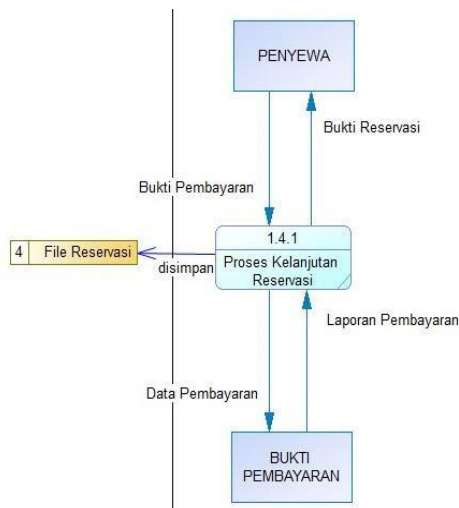
Picture 4. DFD Contexts



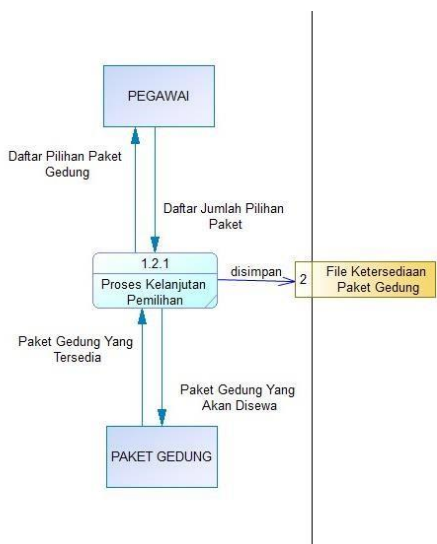
Picture 5. DFD Level 0



Picture 6. Administration Process



Picture 9. Reservation Process



Picture 7. Selection Process



Picture 8. Filling Process

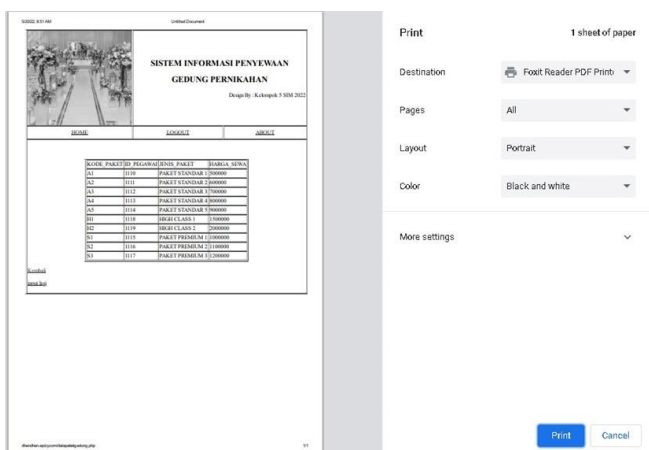
b. Web



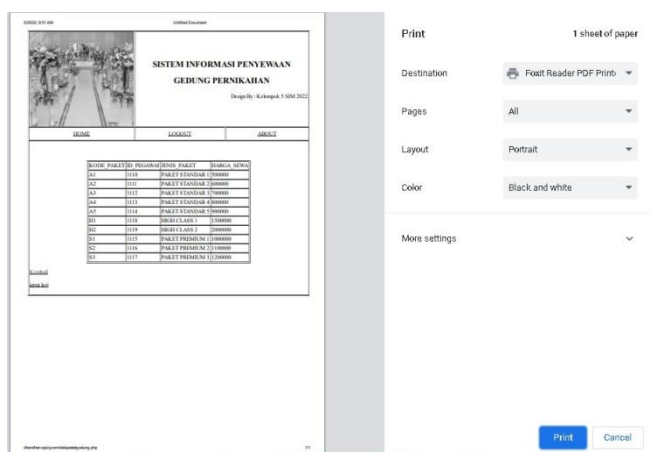
Picture 10. Initial View after Opening the Web



Picture 11. The Output Display of Payment Proof Data Filling



Picture 12. The View of PDF Report Output from Tenant Data



Picture 13. The PDF Output View of the Building Package Data Report

CONCLUSION

The conclusion from this study is that all the attributes contained in each entity have a variable character data type. Each entity is connected to other entities through certain relationships and cardinality. From the output of the building leasing information system database, it is found that each attribute in each entity contains the data set that has been input. There are several views on this wedding hall rental website, namely the

home, login, failed, and successful displays. There is a display of employee data pages, tenants, building packages, and proof of leasing. And there is a display of employee input, tenants, building packages, and proof of leasing. Where, the input entity will produce output on the data page view. Hosting can be done if you have a supporting domain, and a database that has been formed. There was no error in the database for renting the wedding hall, meaning that the database was successful in hosting the website was formed.

REFERENCES

- Abas, N. H., Adman, N., & Deraman, R. (2017). Development of Occupational Safety and Health Requirement Management System (OSHREMS) Software Using Adobe Dreamweaver CS5 for Building Construction Project. *MATEC Web of Conferences*, 103, 1–8. EDP Sciences. <https://doi.org/10.1051/mateconf/201710303011>
- Al-Fedaghi, S. (2021). Conceptual Data Modeling : Entity-Relationship Models as Thinging Machines. *IJCSNS International Journal of Computer Science and Network Security*, 21(9), 147–160. <https://doi.org/10.48550/arXiv.2109.14717>
- Boonyopakorn, J. (2017). Technology enhanced language learning on English Communication for EFL learners. *Technology*, 13(3), 85–93.
- Dilling, T. J. (2020). Artificial Intelligence Research: The Utility and Design of a Relational Database System. *Advances in Radiation Oncology*, 5(6), 1280–1285. <https://doi.org/10.1016/j.adro.2020.06.027>
- El Alami, A., & Bahaj, M. (2018). The Migration Of A Conceptual Object Model Com (Conceptual Data Model CDM, Unified Modeling Language UML Class Diagram...) To The Object Relational Database ORDB. *MAGNT Research Report (ISSN. 1444-8939)*, 2(4), 318–332.
- Faqihuddin, A., Wahyuddin, I., & Nathasia, N. D.

- (2020). Mysql Database Processing Information System Using The System Development Life Cycle (SDLC) Method At Quality Guarantee Agency Working Unit At National University: Mysql Database Processing Information System Using The System Development Life Cycle (SDLC) Method At Quality Guarantee Agency Working Unit At National University. *Jurnal Mantik*, 4(1), 399–406.
- Gabriel, J. M. O. (2017). *Management Information System (MIS): Concepts and Controversies*. Port Harcourt: Cutting Edge Publishers.
- Han, Z., & Hu, H. (2021). Prodb: A Memory-Secure Database Using Hardware Enclave And Practical Oblivious RAM. *Information Systems*, 96(1), 1–9.
- Hooper, P., & Page, J. (1997). Organizing Information and Data Flows in Business. *National Public Accountant*, 42(9), 9–14.
- Krol, K., & Zdonek, D. (2022). Initiatives to Preserve the Content of Vanishing Web Hosting. *Sustainability*, 14(9), 1–10. <https://doi.org/10.3390/su14095236>
- Lucey, T. (2005). *Management Information Systems* (9th ed.). London: Thomson Learning.
- Mukaromah, S., Pratama, A., Ithriah, S. A., & Putra, A. B. (2020). Analysis and Design Student Entrepreneurship Information System. *Journal of Physics: Conference Series*, 1569(2), 1–6. IOP Publishing. <https://doi.org/10.1088/1742-6596/1569/2/022045>
- Nugraha, A. H. (2021). Making The Cashier Application For The Tonguewing Meatball Restaurant Using Mysql and Netbeans. *International Journal of Science, Technology & Management*, 2(5), 1793–1799.
- Simanjuntak, H., Nainggolan, A., Simatupang, D., & Manurung, D. D. V. (2017). An Automatic Tool to Transform Star Schema Data Warehouse to Physical Data Model. *Journal of Telecommunication, Electronic and Computer Engineering (JTEC)*, 9(2–3), 55–59.
- Sudiartha, I. K. G., Indrayana, I. N. E., Suasnawa, I. W., Asri, S. A., & Sunu, P. W. (2020). Data Structure Comparison between MySQL Relational Database and Firebase Database NoSql on Mobile Based Tourist Tracking Application. *Journal of Physics: Conference Series*, 1569(3), 1–7. IOP Publishing. <https://doi.org/10.1088/1742-6596/1569/3/032092>
- Suman, S., Andrli, S., & Jakupovi, A. (2022). A Corpus-Based Sentence Classifier for Entity-Relationship Modelling. *Electronics*, 11(6), 889–895. <https://doi.org/10.3390/electronics11060889>
- Utami, T., Lapakristi, Y. I., & Zuraida, R. (2022). Design analysis of Nutricious website as a diet consultation and catering services to support promote healthy lifestyle. *Procedia Computer Science*, 197(1), 172–179. <https://doi.org/10.1016/j.procs.2021.12.180>
- Wibowo, D. O., & Priandika, A. T. (2021). Sistem Pendukung Keputusan Pemilihan Gedung Pernikahan Pada Wilayah Bandar Lampung Menggunakan Metode Topsis. *Jurnal Informatika Dan Rekayasa Perangkat Lunak*, 2(1), 73–84.
- Wong, T. Y., Huang, J. J., Cooke, E. A., Hoffmann, J. C., & Donnelly, E. F. (2022). Adapting To The Era Of Virtual Recruitment: Radiology Departmental Website Response To COVID-19 And Portrayal Of The Resident Experience. *Academic Radiology*, 29(5), 771–778. <https://doi.org/10.1016/j.acra.2021.11.023>
- Young-Harry, D. L., Oparanma, A. O., & Ejo-Orusa, H. A. (2018). Management Information System And Organizational Performance Of Seven Up Bottling Company In Aba And Port Harcourt. *International Journal of Economics and Business Management*, 4(4), 53–61.
- Yudiyana, I. M. G., Sumichan, A., & Ariyani, N. W. S. (2018). Management Information System of Event Organizer. *International Journal of Engineering and Emerging Technology*, 3(2), 116–122.