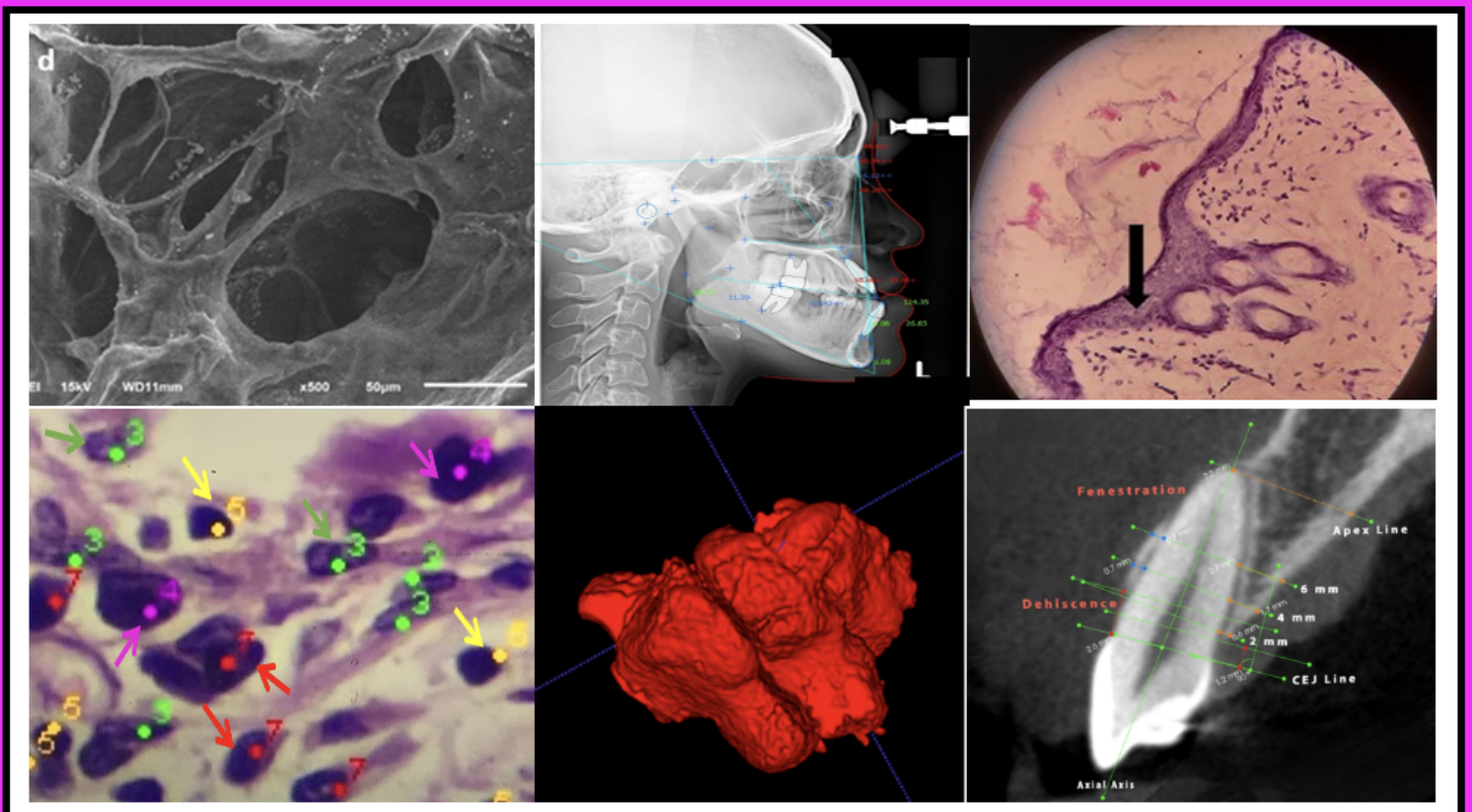


Journal of
International
Dental and Medical
Research





JIDMR
Journal of International Dental and Medical Research

Journal of International Dental and Medical Research



Editorial Board of JIDMR

Prof. Dr. Izzet YAVUZ

Editor-in-Chief and General Director

Advisory Board

Prof. Dr. Refik ULKU **Editor for Medicine**

Prof. Dr. Zulkuf AKDAG **Editor for Biomedical Research**

Prof. Dr. Ozkan ADIGUZEL **Associate Editor**

Gajanan Kiran KULKARNI **(CANADA)**

Betul KARGUL **(TURKEY)**

Diah Ayu MAHARANI **(INDONESIA)**

Francisco Cammarata-Scalisi **(Venezuela)**

Myroslav Goncharuk-Khomyn **(UKRAINE)**

Ferranti WONG **(UK)**

Zeki AKKUS **(TURKEY)**

Michele CALLEA **(ROME, ITALY)**

Zelal ULKU **(TURKEY)**

Mosc

Linda

Yaser

Yuliy

Nik N

Editorial Board

Abdel Fattah BADAWI (EGYPT)

Guven BASARAN (TURKEY)

Nezahat A

Abdurrahman ONEN (TURKEY)

Guven ERBIL (TURKEY)

Nihal HAM

Ahmet YALINKAYA (TURKEY)	Halimah AWANG (MALAYSIA)	Nik Noriah
Ahmet DAG (TURKEY)	Halit AKBAS (TURKEY)	Nicola Prai
Ali Al-ZAAG (IRAQ)	Heloisa Fonseca MARAO (BRAZIL)	Nurten AKI
Ali BUMIN (TURKEY)	Hilal TURKER (TURKEY)	Nurten ER
Ali FADEL (EGYPT)	Huseyin ASLAN (TURKEY)	Orhan TAC
Ali GUR (TURKEY)	Igor BELYAEV (SWEDEN)	Ozant ONC
Ali Riza ALPOZ (TURKEY)	Ilhan INCI (ZURICH)	Ozgur UZL
Ali Riza Tunçdemir (TURKEY)	Ilker ETIKAN (TURKEY)	Ozkan ADI
Allah Bakhsh HAAFIZ (USA)	Isil TEKMEK (TURKEY)	Rafat Ali S
Alpaslan TUZCU (TURKEY)	Isin ULUKAPI (TURKEY)	Refik ULKI
Alpen ORTUG (TURKEY)	Jalen DEVECIOGLU KAMA (TURKEY)	Sabiha Zel
Armelia Sari WIDYARMAN (INDONESIA)	Kemal CIGDEM (TURKEY)	Sabri BATI
Ashish AGGARWAL (INDIA)	Kemal NAS (TURKEY)	Sadullah K
Ayşe GUNAY (TURKEY)	Kewal KRISHAN (INDIA)	Saul Martir
Aziz YASAN (TURKEY)	King Nigel MARTYN(HONG KONG, CHINA)	Sedat AKC
Awiruth KLAISIRI (THAILAND)	Kursat ER (TURKEY)	Seher GUN
Balasubramanian MADHAN (INDIA)	Levent ERDINC (TURKEY)	Selahattin
Benik HARUTUNYAN (ARMENIA)	Luca TESTARELLI (ROME)	Selahattin
Betul KARGUL (TURKEY)	Lucianne Cople MAIA (BRAZIL)	Serdar ER
Betul URREHMAN (UAE)	Luciane Rezende COSTA (BRAZIL)	Serdar ON
Bugra OZEN (TURKEY)	Marri Sai ARCHANA (INDIA)	Sergio Adr
Carlos Menezes AGUIAR (BRAZIL)	Manoj KUMAR (INDIA)	Serhan AK
Cemil SERT (TURKEY)	Marcelo Rodrigues AZENHA (BRAZIL)	Sertac PEI
Chiramana SANDEEP (INDIA)	Marcia Cancado FIGUEIREDO (BRAZIL)	Seyed Ami
Christine Bettina STAUDT (SWITZERLAND)	Marco MONTANARI (ITALY)	Seyit Burh
Cihan AKGUL (TURKEY)	Margaret TZAPHLIDOU (GREECE)	Shailesh L
Claudia DELLAVIA (ITALY)	Maria Elisa Oliveira dos SANTOS (BRAZIL)	Sinerik N. J
Diah Ayu MAHARANI (INDONESIA)	Medi GANIBEGOVIC (BOSNIA and HERZEGOVINA)	Smaragda
Dinesh Rokaya (NEPAL)	Mehmet DOGRU (TURKEY)	Sossani SI
Edoardo BAUNER (ROMA)		Stefano Di

Emmanuel Joao N. Leal da SILVA (BRAZIL)	Mehmet Emin ERDAL (TURKEY)	Sunit Kr. JI
Emin Caner TUMEN (TURKEY)	Mehmet Sinan DOGAN (TURKEY)	Stephen D
Emrullah BAHSI (TURKEY)	Mehmet Zulkuf AKDAG (TURKEY)	Susumu TI
Ertunc Dayı (TURKEY)	Meral ERDİNC (TURKEY)	Suha TUR
Fadel M. ALI (EGYPT)	Michele CALLEA (ITALY)	Suleyman
Fahinur ERTUGRUL (TURKEY)	Mohamed TREBAK (USA)	Taskin GUI
Feral OZTURK (TURKEY)	Mohammad Khursheed Alam (KSA)	Ufuk ALUC
Feridun BASAK (TURKEY)	Mohammad SUHRON (INDONESIA)	Ugur KEKL
Ferranti WONG (UNITED KINGDOM)	Mohammed Mustahsen URREHMAN (UAE)	Xiong-Li Yi
Feyzi Çelik (TURKEY)	Moschos A. PAPADOPOULOS (GREECE)	Vatan KAV.
Feyzullah Uçmak (TURKEY)	Mostaphazadeh AMROLLAH (IRAN)	Yasar YILC
Figen SEYMEN (TURKEY)	M.S. Rami REDDY (INDIA)	Yasemin Y.
Filippo BATTELLI (ITALY)	Muhammad FAHIM (INDIA)	Yavuz SAN
Filiz Acun KAYA (TURKEY)	Mukadder ATMACA (TURKEY)	Yu LEI (US
Flavio Domingues Das NEVES (BRAZIL)	Murat AKKUS (TURKEY)	Yuri LIMAN
Folakemi OREDUGBA (NIGERIA)	Murat SOKER (TURKEY)	Zafer C. CI
Francesca De ANGELIS (ITALY)	Mustafa KELLE (TURKEY)	Zeki AKKU
Gaetano PAOLONE (ITALY)	Mustafa ZORTUK (TURKEY)	Zuhal KIRZ
Gajanan Kiran KULKARNI (CANADA)	Muzeyyen YILDIRIM (TURKEY)	Zurab KOM
Gamze AREN (TURKEY)	Neval Berrin ARSERIM (TURKEY)	
Gauri LELE (INDIA)		
Gonul OLMEZ (TURKEY)		
Gulsen YILMAZ (TURKEY)		
Gulten UNLU (TURKEY)		

DENTISTRY

- EXPERIMENTAL ARTICLE**
1. **Comparative evaluation of the remineralization potential of Theobromine and Fluoride containing dentifrices using Scanning Electron Microscopy with Energy Dispersive X-Ray Analysis: An in-vitro Study**
Nithya Annie Thomas, Priya Shetty, Charisma Thimmaiah, Sowmya B. Shetty, Nimmy Sabu, Kavita Bekal Kripalani
Pages 1314-1320
- EXPERIMENTAL ARTICLE**
2. **Attachment of Streptococcus Mutans to Intraoral Suture Materials: An in Vitro Study**
Denta Aditya Prasetya, Poerwati Soetji Rahajoe, Bambang Dwirahardjo, Michael Haryadi Wibowo
Pages 1321-1326
- EXPERIMENTAL ARTICLE**
3. **Erythrocyte Sedimentation Rate as an Alternative to C-Reactive Protein in Rheumatoid Arthritis Patients with Periodontitis**
Anirudh B. Acharya, Ibbani Padakannaya, Srinath Thakur
Pages 1327-1333
- EXPERIMENTAL ARTICLE**
4. **Effect of Platelet Rich Plasma Incorporated to Autologous Bone Graft on Collagen Production in vivo**
Vera Julia¹, Fitriana, Benny Sjariefsjah Latief, Lilies Dwi Sulistyani, Bambang Pontjo, Tri Isyani Tungga Dewi
Pages 1334-1338
- EXPERIMENTAL ARTICLE**
5. **An Invitro Study to Evaluate and Compare the Effect of Surface Treatment of Implant Abutments on the Retentiveness of Three Commercially Available Provisional Cements**
Ayesha Shaziya Jubapu, Brilvin Pinto
Pages 1339-1350
- EXPERIMENTAL ARTICLE**
6. **Microvascular Activity from the Wound Healing Process in Wistar Rats Due to Administration of Anredera Cordifolia (Ten.) Steenis**
Christian Khoswanto
Pages 1351-1356
- EXPERIMENTAL ARTICLE**
7. **The Effect of Polyvinyl Alcohol on the Physico-Chemical Properties of Collagen-Chitosan Membranes**
Agus Susanto, Ira Komara, Arief Cahyanto, Basril Abbas, Fajar Lukitowati, Yessy Warastuti
Pages 1357-1362
- EXPERIMENTAL ARTICLE**
8. **Efficacy of Bidara Leaf (Ziziphus Mauritiana) Viscous Extract to Gingival Wound Healing in Wistar Rats**
Mochammad Taha Ma'ruf, Putu Sulistiawati Dewi, Dewi Farida Nurlitasari
Pages 1363-1372
- EXPERIMENTAL ARTICLE**
9. **Antibiofilm Efficacy of Myrmecodia Pendens Methanol Extract and NaOCl Against Enterococcus Faecalis ATCC 29212**
Faisal Kuswandani, Mieke H. Satari, Ani M. Maskoen
Pages 1373-1378
- EXPERIMENTAL ARTICLE**
10. **In Vitro Wound Healing Potential of Stem Extract of Spatholobus littoralis Hassk**
Yessy Ariesanti, Wiwiek Poedjiastoeti, Komariah, Amalia Fauzana Wijaya
Pages 1379-1385

EXPERIMENTAL ARTICLE

- 11. Osteoinduction Ability of Human Adipose-Derived Mesenchymal Stem Cell with Chitosan Scaffold Combination Towards Blood Serum Phosphorus Levels**

Dian Agustin Wahjuningrum, Nindya R A Marhendra, M. Roelianto, Ari Subiyanto, Irmaleny, Fery Setiawan, Syania E Febriyanti, Setyabudi, Tamara Yuanita, Swadheena Patro, Anuj Bhardwaj
 Pages 1386-1393

EXPERIMENTAL ARTICLE

- 12. The Effect of Tooth-Brushing Activity, Temperature, and pH to Acrylic and Composite Resin Microplastic Release**

Jackson Dipankara, Joko Kusnoto, Rosalina Tjandrawinata, Rahmi Amtha
 Pages 1394-1400

EXPERIMENTAL ARTICLE

- 13. Cellulose Fiber from Coconut Coir for Development of Dental Composite Filler**

Twı Agnita Cevanti, Nur Shiyama Purnama Sari, Steella Ilham Isnaini, Mahardika F. Rois, Heru Setyawan, Adioro Soetojo, Ira Widjiastuti
 Pages 1401-1406

EXPERIMENTAL ARTICLE

- 14. Mefenamic Acid Induces Apoptosis in Oral Malignant Burkitt's lymphoma Through Caspase-3 and -9 Pathways Followed by Down-Regulation of Cox-2 and Overexpression of p27Kip-1**

Supriatno, Fauzi Adityawan, Faizal Dentawan Pritama, Muhammad Arindra Saka, Sartari Entin Yuletnawati, Faisal Fikri Hakim
 Pages 1407-1412

EXPERIMENTAL ARTICLE

- 15. The Effect of the Application of (Garcinia mangostana L.) towards PDGF-B Expression on Human Gingival Fibroblast Cell Culture After Wound Healing Scratch Test Assay (In-Vitro Study)**

Felicia Laurens Lesmana, Andra Rizqiawan, Indra Mulyawan, Ni Putu Mira Sumarta, David B. Kamadjaja, Coen Pramono D, Tobiumei Kei, Gde Djodi Satria Rurus, Naura Athiyyah Sativa, Rozhaline Apriliany Fanddhy
 Pages 1413-1418

EXPERIMENTAL ARTICLE

- 16. The Effects of Ag⁺ Ion in Osteoblast Cell Proliferation (In Vitro Study)**

R. Aries Muharram, Coen Pramono D, Pratiwi Soesilawati, Muhammad Subhan Amir, Aisyah Rachmadani Putri Gofur, Ajeng Hayyuning Citrasari
 Pages 1419-1424

EXPERIMENTAL ARTICLE

- 17. Physical Modification of Bovine Amniotic Membrane for Dental Application**

Octarina, Elly Munadzirah, Fathilah Abdul Razak
 Pages 1425-1428

EXPERIMENTAL ARTICLE

- 18. Effects of Centella asiatica Leaves Extract on Dimethyl Benz(A) Anthracene (DMBA) Induced Oral Epithelial Dysplasia in Rats**

Ahyar Riza, Gostry Aldica Dohude, Anisa Fitri
 Pages 1429-1434

EXPERIMENTAL ARTICLE

- 19. Spectroscopy Structure Analysis of Ellagic Acid and Calcium Phosphate**

Debby Saputera, Intan Nirwana, Michael Josef Kridanto Kamadjaja
 Pages 1435-1441

EXPERIMENTAL ARTICLE

- 20. The Effect of Titanium Oxide (Tio₂) Nanoparticles Addition on Polymethyl Methacrylate Denture Base Impact Strength, Tensile Strength, and Hardness**

Sanggry Mutiara, Hubban Nasution, Ricca Chairunnisa, Kholidina Harahap, Sefty Aryani Harahap, Astrid Yudhit, Febby Revita Sari, Slammat Tarigan
Pages 1442-1446

EXPERIMENTAL ARTICLE

- 21. The Pattern of Collagen, Col1a, Bsp and Mmp-8 in Alveolar Bone Socket Post Tooth Extraction of Rattus Norvegicus Strain Wistar After Induced With Hydroxyapatite Bovine Tooth Graft**

Nanik Zubaidah, Yosefin Adventa, Dian Dwi Pratiwi, Latief Mooduto, Ernie Maduratna Setiawati, Sri Kunarti
Pages 1447-1452

EXPERIMENTAL ARTICLE

- 22. The Benefits of the Combination of Vitamin D3, K2 Supplements, and UV-B Exposure for Increasing Bone Density: A Simple Solution for Bone Health**

Sindy Cornelia Nelwan, Udijanto Tedjosongko, Satiti Kuntari, Daniel Haryono Utomo, Tania Saskianti, Mega Moeharyono Puteri, Devi Dharmawan, Yufita Fitriani, Pradita Agung Kurnia, Amalia Ramadhani Mufida, Nadhia Zahria Fajrin, Retno Pudji Rahayu, Nunthawan Nowwarote
Pages 1453-1458

EXPERIMENTAL ARTICLE

- 23. The Effect of Chitosan and Acrylate Acid Complex into Acrylic Resin as Denture Material Against Fibroblast and Inflammatory Cells**

Titik Ismiyati, Ananto Ali Alhasyimi, Widowati Siswomihardjo, Supriatno
Pages 1459-1464

EXPERIMENTAL ARTICLE

- 24. Comparison of the Effect of Calcium Hydroxide Combination with Cocoa Pod Husk Extract and Green Tea Extract on Fibroblast and Alp Activation**

Tamara Yuanita, Lailatun Tedja, Debby Suryani, Irma Drismayanti
Pages 1465-1471

CLINICAL ARTICLE

- 25. To assess the usefulness of the Mandibular Ramus in determining Age and Gender among Malaysians in digital OPGs**

Ranjana GARG, Tiew JACKY, Timothy Gan Hwa YUNG, Young Wen LI, Tengku Mariam Batrisyia Tengku BRAHANUDIN
Pages 1472-1477

CLINICAL ARTICLE

- 26. The Relationship Between Parenting Stress in Parents and Oral Health-Related Quality of Life (OHRQoL) Children with Down Syndrome**

Masayu Sesiliana, Willyanti Soewondo, Inne Suherna Sasmita
Pages 1478-1484

CLINICAL ARTICLE

- 27. Accuracy of Sphenoidal Sinus Morphometry in Forensic Identification Using Cone Beam Computed Tomography**

Asmaa T Uthman, Abdullah Alomar, Ali Almkhtar, Rama Jaber, Raneen Essale, Rifqa Abdulsalam, Samsam Warsame, Walid Shaaban Elsayed, Natheer H Al-Rawi
Pages 1485-1491

CLINICAL ARTICLE

- 28. Relationship Between the Satisfaction of Removable Denture Patients and Nutritional Status**

Rifka Dennisa, Lia Kartika Wulansari, Fakhrana Ariani Ayub
Pages 1492-1497

TABLE OF CONTENTS / 2021; 14 (4)

CLINICAL ARTICLE

- 29. Fruits and Vegetables: A Cost-effective Practical Solution in Periodontal Pre-Clinical Surgical Training for Postgraduate Students**
Fouad H AL-Bayaty, MFH Hidayat, Farha Ariffin, Erni Noor, Mahyunah Masud,
Muhammad Hilmi Bin Zainal Ariffin, Hafizul Izwan Mohd Zahari, Fara Azwin Adam
Pages 1498-1502
- 30. Lifestyle as a Risk Factor of High Periodontitis Prevalence with and without Type 2 Diabetes Mellitus in Surabaya**
Titiek Berniyanti, Retno Palupi, Dini Setiyowati, Aulia Rahmadhani, Dinda Novia, Novitasari Mira Afanda,
Nadya Innasa Khairani, Annisa Zahra Nurlaili, Fidelia Kartikasari
Pages 1503-1508
- 31. Effects of Sucking Exercise using Straws on Mouth Rinsing Ability in Children with Down syndrome**
Megananda Hiranya Putri, Susi Sukmasari, Eliza Herijulianti, Hetty Anggrawati, Neneng Nurjanah,
Arlette Suzy Setiawan
Pages 1509-1516
- 32. Effect of Carbonate Apatite Membrane as Adjunctive Therapy of Scaling and Root Planing on Gingival Crevicular Fluid Matrix Metalloproteinase-8 in Chronic Periodontitis Patient**
Ira Komara, Siti Sopiadin, Ina Hendiani, Nunung Rusminah, Agus Susanto
Pages 1517-1522
- 33. Position of Unilateral / Bilateral Permanent Canine Impaction on the Prognosis of Treatment with KPG Index: 3D Cone Beam Computed Tomography Analysis**
Nina Agustin Chrystinasari, Ida Bagus Narmada, Ari Triwardhani
Pages 1523-1530
- 34. Development of the Indonesian version of the Oral Health Impact Profile in Edentulous Prosthodontic Patients**
Muslita Indrasari, Lindawati S. Kusdhany, Diah Ayu Maharani, R. Irawati Ismail
Pages 1531-1536
- 35. Correction of Gummy Smile using Botulinum Toxin**
Awad Ashekhi, Maher Al Shayeb, Danyah Ashekhi, Amany Ghazy, Aiman Abu-fanas, Syed Kuduruthullah,
Ahmed Taha, Ibrahim Taher
Pages 1537-1541
- 36. Surface Electromyography Reveal Association between Masticatory Muscles with Malocclusion Class I And Class III Skeletal in Javanese Ethnic Patient**
Dwi Rahmawati, I Gusti Aju Wahyu Ardani, Thalca hamid, Irina Fardhani, Haydar Taftazani,
Alexander Patera Nugraha, Martha Kurnia Kusumawardani
Pages 1542-1546
- 37. Factors Associated with Dental Attendance Among Indonesian Adults: A Cross-Sectional Study**
Latifah Fitriani Rakhman, Atik Ramadhani, Diah Ayu Maharani
Pages 1547-1551

TABLE OF CONTENTS / 2021; 14 (4)

- 38. Knowledge, Attitude, Practice Towards Plaque Disclosing Agent Among Dentists in West Java, Indonesia**
Giannissah Fathina Fairuz, Siti Sopiati, Amaliya Amaliya
Pages 1552-1560
CLINICAL ARTICLE
- 39. Prevalence of Dehiscence and Fenestration on Incisors after Orthodontic Treatment in High-Angle Patients using Cone Beam Computed Tomography**
Yoshua Christian Hendrik, Retno Widayati, Menik Priaminiarti, Miesje Karmiati Purwanegara
Pages 1561-1568
CLINICAL ARTICLE
- 40. Prevalence of Most Common Tongue Lesions Related to Degenerative Diseases in the Elderly**
Adiastuti Endah Parmadiati, Diah Savitri Ernawati, Fatma Yasmin Mahdani, Nurina Febriyanti Ayuningtyas, Meircurius Dwi Condro Surboyo, Aulya Setyo Pratiwi, Riyan Iman Marsetyo, Candrika Ramya Inastu, Vint Erawati
Pages 1569-1572
CLINICAL ARTICLE
- 41. Associated Factors of Early Childhood Caries (ECC) Among 24–42-Month-Old-Children in Jakarta: A Cross-Sectional Study**
Febriana Setiawati, Iwany Amalliah, Preticia, Atik Ramadhani, Diah Ayu Maharani
Pages 1573-1579
CLINICAL ARTICLE
- 42. Elements Affecting Toothbrushing Parenting among Mothers in Banjarbaru City**
Widodo, R. Darmawan Setijanto, Taufan Bramantoro
Pages 1580-1586
CLINICAL ARTICLE
- 43. The First Case Report about Noninvasive Impression Taking in Orthodontic Patient with Epidermolysis Bullosa**
Oleg Valovikov, Ellina Velichko, Svetlana Razumova, Olga Bait Said
Pages 1587-1591
CASE REPORT
- 44. Oral Hygiene, Periodontal Condition and Their Treatment Need of Teaching Faculty in Higher Schools**
Sunitha.S, Aruna.G, Vidya Doddawad, Arunpriya Srinivasan
Pages 1592-1598
CASE REPORT
- 45. Dental Management of Severe Malocclusion and Syndromic Multiple Odontogenic Keratocysts**
Nabeel Almotairy
Pages 1599-1603
CASE REPORT
- 46. Intraosseous Anesthesia of the Mandibular Molars: A Critical Literature Review**
Emiliya Simeonova, Valeriya Aleksandrova, Svetlin Aleksandrov
Pages 1604-1610
REVIEW
- 47. Role of Salivary Nitric Oxide on Caries Status of Children with Down Syndrome**
Nita Naomi, Tania Saskianti, Ardianti Maartrina Dewi, Barnabas Bonardo, Alit Rahma Estu, Brian Maulani
Pages 1611-1616
REVIEW

TABLE OF CONTENTS / 2021; 14 (4)

REVIEW

- 48. Minimally Invasive Posterior Full Crown Competitors: Onlays, Occlusal Veneers, Vonlays and Endocrowns: A Review and Proposed Classification**

Sherif Sultan, Hmoud Al Garni, Meshal Al Onazi, Kiran Gangi, Salah Al Otha, Fahad Al Ruwaili, Saif Al Anazi, Sultan Al Shammari, Abdul Aziz Fandi, Mostafa Fayad
Pages 1617-1622

REVIEW

- 49. Periodontitis Affects Skeletal Muscle Metabolism Through an Increase in Proinflammatory Cytokines**

Risma Aprinda Kristanti, Taufan Bramantoro, Pratiwi Soesilawati, Erni Maduratna Setiawatie, Bambang Purwanto
Pages 1623-1628

REVIEW

- 50. Dental Articulators**

Rawan Abu Zaghlan, Jamal Aqrabawi, Omar Al-Fatyan, Basmah AbuZaghllan
Pages 1629-1638

REVIEW

- 51. Teachers' Role in Regular and Special Need Students' Oral Health: A Narrative Review**

Tania Saskianti, Mega Moeharyono Puteri, Barnabas Bonardo, Brian Maulani, Nita Naomi, Alit Rahma Estu
Pages 1639-1647

REVIEW

- 52. Strategically Important Features of the Influence of Sodium Hypochlorite on the Mechanical Properties of Dentin: A Systematic Review**

Zurab Khabadze, Alexandra Kotelnikova, Mikhail Protsky, Oleg Mordanov, Ekaterina Faustova, Irina Nikolskaya, Shushanik Minosyan, Khadizhat Omarova, Ekaterina Shilyaeva, Daria Nazarova, Alena Kulikova
Pages 1648-1655

REVIEW

- 53. Comparison of Screw- and Cement-Retained Dental Implant from Biological, Clinical, and Technical Complications: A Systematic Review**

Margaretha Elfridamanuela Samosir, Nada Fairuzia Soadi, Sheila Indrisavira, Hubban Nasution
Pages 1656-1663

REVIEW

- 54. Clinical Dental Risk Management: The Needs and Challenges**

Didin Mirandani, Taufan Bramantoro, Dini Setyowati
Pages 1664-1666

MEDICINE

EXPERIMENTAL ARTICLE

- 55. Mangiferin Attenuates Doxorubicin-Induced Nephrotoxicity in Rats Through Reduction of Oxidative Stress**

W. Arozal, A.J. Barinda, E.R. Monayo, R. Aulia
Pages 1667-1674

CLINICAL ARTICLE

- 56. Evaluation of 900 and 1800 Mhz Radiofrequency Radiation Emitted from Mobile Phones on Pregnant Women**

Hava Bektas, Suleyman Dasdag, Mehmet Selcuk Bektas
Pages 1675-1683

TABLE OF CONTENTS / 2021; 14 (4)

CLINICAL ARTICLE

57. Infrared Thermography as a Evaluation Metod an Athlete's Emotional Readiness

Kozhevnikova I. S., Anikina N.Yu., Pankov M. N., Plaksin V.A., Startseva L. F.
Pages 1684-1687

CLINICAL ARTICLE

58. Effect of Nutritional Literacy on Mother's Self Efficacy in Child Feeding (Effect of Nutritional Literacy on Mother's)

Maula Mar'atus Solikhah, Lita Heni Kusumawardani, Nurul Devi Ardiani, Annisa Cindy Nurul Afni, Atiek Murharyati¹, Siti Nurjanah, Erinda Nur Pratiwi
Pages 1688-1693

CLINICAL ARTICLE

59. The Implementation of Theory of Planned Behavior in Identifying Behavioral Models of Nursing Documentation in "X" Hospital

Erna Dwi Wahyuni, Nursalam, Yulis Setiya Dewi, Amel Dawod Kamel
Pages 1694-1700

CLINICAL ARTICLE

60. Overview of Self-Care of Patients with Chronic Kidney Disease based on a Family Perspective

Virgianti Nur Faridah, Nursalam Nursalam, Ninuk Dian Kurniawati, Trijati Puspita Lestari, Nurul Hikmatul Qowi, Arifal Aris
Pages 1701-1704

CLINICAL ARTICLE

61. Factors Affecting Anemia Prevention Behavior in Pregnant Women based on Lawrence Green's Theory

Mira Triharini, Ayu Rahmawati, Aria Aulia Nastiti, Yulis Setiya Dewi, Smriti Kana Mani
Pages 1705-1708

CLINICAL ARTICLE

62. Cinematherapy-based Group Reminiscence on Older Adults' Quality of Life

Intan M. S. Batubara, Niken Y. Sari, Febriana S. Sari, Megan Eagle, Erlina Windyastuti, Erlyn Hapsari, Desy Widyastutik, Joko Santoso
Pages 1709-1714

CLINICAL ARTICLE

63. Comparison of Urogynecological Care in Hospitals Before and During the SARS CoV-2 Infection: The Case Approach in Dr. Soetomo Hospital Indonesia

Eighty Mardiyani Kurniawati, Hari Paraton, Gatut Hardiyanto, Azami Denas Azinar, Tri Hastono Setyo Hadi, Rizqy Rahmatyah, Nur Anisah Rahmawati
Pages 1715-1721

CLINICAL ARTICLE

64. Effectiveness of the "Emotion Recognition" Music Therapy Module in Schizophrenia Patients: A Quasi Experimental Study

Pangeran Ericson Arthur Siahaan, AAAA Kusumawardhani, Raden Irawati Ismail, Khamelia Malik
Pages 1722-1726

CLINICAL ARTICLE

65. Suboptimal Care on Maternal Near-Miss Cases: A Study from s Tertiary Referral Hospital in East Java, Indonesia

Hendy Hendarto, Hanifa Erlin Dharmayanti, Baksono Winardi, Budi Prasetyo, Muhammad Ardian Cahya Laksana, Muhammad Yusuf, Rizki Pranadyan, Pandu Hanindito Habibie, Bambang Trijanto, Erni Rosita Dewi, Alifina Izza, Mohammad Afzal Mahmood
Pages 1727-1735

CLINICAL ARTICLE

66. Natural Killer Cell in Mild and Severe Systemic Lupus Erythematosus

Wita Kartika Nurani, Gatot Soegiarto, Yuliasih
Pages 1736-1742

CASE REPORT

67. Case Study: Health Workers' Perspective on Treatment of People with Post-Pasung Mental Disorder

Febriana S. Sari, Novy H.C. Daulima, Ice Y. Wardani, Intan M.S. Batubara, Ariyanti, Heni N. Kusumawati,
Wahyuningsih Safitri, Yunita Wulandari
Pages 1743-1747

REVIEW

68. Diabetes and Metabolic Syndrome – Risk Factors for Covid-19 (literature review)

Nartikoeva M.I., Dzampaeva Zh.V., Takoeva E.A.
Pages 1748-1752

REVIEW

69. The Effectiveness of Tai Chi on Increasing Exercise Capacity and Quality of Life in Patients with Chronic Obstructive Pulmonary Disease: A Systematic review. (Tai Chi Effectiveness in COPD Patients)

Yosin Herloheti Pella, Hasanudin, Yoyok Bakti Prasetyo, Joel Rey Ugsang Acob, Yulis Setiya Dewi
Pages 1753-1759

REVIEW

70. Analysis Factor Affecting Continuous Learning Based Transformative Learning Theory and Digitalization to Improve Nurse Competencies: Literature Review

Domingos Soares, Nursalam
Pages 1760-1764

REVIEW

71. Energy-Drink and Adverse Kidney Function: A Review of Public Health Concern and Ethical Issue

Ira Suarilah, Chiu-Chu Lin, Ika Yuni Widayawati
Pages 1765-1770

Overview of Self-Care of Patients with Chronic Kidney Disease based on a Family Perspective

Virgianti Nur Faridah¹, Nursalam Nursalam^{1*}, Ninuk Dian Kurniawati², Trijati Puspita Lestari³,
Nurul Hikmatul Qowi⁴, Arifal Aris⁵

1. Faculty of Nursing, Universitas Airlangga Surabaya/ Indonesia.

2. Department of Medical Surgical Nursing, Faculty of Nursing, Universitas Airlangga Surabaya/ Indonesia.

3. Department of Medical Surgical Nursing of the Health Science Faculty Universitas Muhammadiyah Lamongan/ Indonesia.

4. Department of Nursing Management of the Health Science Faculty Universitas Muhammadiyah Lamongan/ Indonesia.

5. Department of Community Health Nursing of the Health Science Faculty Universitas Muhammadiyah Lamongan/ Indonesia.

Abstract

CKD patients undergoing hemodialysis have limitations in physical, psychological and mental care. However, patients with chronic diseases such as CKD do not automatically have the ability to treat themselves. Their families must be able to independently carry out palliative care at home. The purpose of this study is to describe the self-care of patients with chronic kidney disease based on family perspective

This study was a quantitative research with descriptive approach. The sample consisted of 95 respondents determined using consecutive sampling from the population in hemodialysis room. This study used patient self-care variables consisting of self-maintenance, self-management, and self-confidence domains. Research variables were measured using the Self-Care of CKD Index and analyzed using descriptive analysis

The results show that the highest percentage of self-care level is wholly compensatory (47.4%) and all self-care domains exist at the level of wholly compensatory systems, namely self-maintenance (47.4%), self-management (42.1%), and self-confidence (42.1%). The ability of CKD patients to perform self-care while at home shows low dependence. Self-maintenance is the biggest domain among other self-care domains. The family has an important role in self-care as a support system at all domain, especially in self-managemen.

Clinical article (J Int Dent Med Res 2021; 14(4): 1701-1704)

Keywords: Self-care, hemodialysis, Chronic Kidney Disease.

Received date: 15 February 2021

Accept date: 06 August 2021

Introduction

Physical and psychological limitations can become a disturbance for CKD patients undergoing hemodialysis in performing self-care independently. CKD patients undergoing hemodialysis need skills in self-care. Currently, the ability of patient self-care is of global concern along with an increase in the incidence of chronic disease, an increase in medical costs and an insufficient number of educators, which are important reasons for self-care in improving the quality of life of patients, families and communities¹. The ability of CKD patients to do self-care cannot be explained.

The prevalence of CKD sufferers tends to continue to increase. According to the Global Burden of Disease study, CKD contributed 956,200 deaths worldwide, an increase of 134% from 1990². Indonesia is a country with a high rate of CKD sufferers; the Indonesian Nephrology Association (PERNEFRI) estimates that there are 70,000 people with CKD in Indonesia. This number will continue to increase by about 10% every year³. According to data from Riskesdas in 2018, the prevalence of CKD in Indonesia is 0.38% of total diagnoses and the proportion of hemodialysis is 19.33% of diagnoses⁴. The prevalence of ESRD continues to increase and patients with ESRD have unique and unmet needs for palliative care⁵. However, the family caregiver's ability to provide care is negatively affected⁶. Negative factors of palliative care are seen from a family perspective, namely the burden of family caregiver and family caregiver independence in providing care assistance independently (family self-care).

*Corresponding author:

Nursalam Nursalam,
Faculty of Nursing, Universitas Airlangga Surabaya,
Indonesia
E-mail: nursalam@fkip.unair.ac.id

Family caregivers in patient palliative care often experience enormous physical, emotional and financial responsibilities associated with providing care. The caregiver burden increases over time in a nonlinear manner from the start of diagnosis to the death of the patient⁷. The family burden when caring for CKD patients undergoing hemodialysis is included in the no-burden or low-burden category for 55 families (57.9%). There is a burden felt by 40 families (42.1%)⁸. The care provided by giver's family care is necessary in all domains of quality of life (physical, psychological, social, spiritual)⁹. The high burden of disease experienced by patients physically and psychologically and the high burden of care experienced by the family make it important for the patient's ability to perform self-care. The self-care approach that is carried out in palliative care is related to three behaviors, namely maintenance, management and self-confidence which will affect the self-care ability of patients and their families in caring for patients with chronic kidney disease with hemodialysis¹⁰. This study aimed to describe the self-care of patients with chronic kidney disease based on family perspective.

Materials and methods

Study Design

This study was a quantitative research with descriptive approach. This research was conducted January 2020 in hemodialysis unit of the Muhammadiyah Hospital, Lamongan city, Indonesia.

Population, Samples, and Sampling

The population in this study were all family CKD patients undergoing hemodialysis. The sampling method in this study was conducted using consecutive sampling technique. The sample recruited from family CKD patients with hemodialysis In Rumah Sakit Muhammadiyah Lamongan for two months were 95 persons.

Instruments

The instrument used to assess family self-care in performing palliative care at home is self-care of CKD index. This questionnaire has three domains, including self-maintenance, self-management, and self-confidence. The number of questions is 26 items. Each question item is scored with Likert scale from 1-4, with a score of 25-50 (wholly compensatory system), 51-76 = (partial compensatory system) and 77-100

(supportive compensatory system).

Procedure

Collecting data uses a measuring instrument in the form of a questionnaire. Primary data are taken directly from respondents (family caregivers). Respondents who met the inclusion criteria served to fill out the questionnaire. The researcher explains the questionnaire filling technique and researchers and research assistants directly fill out and retrieve the completed questionnaires.

Data Analysis

The data obtained were descriptively analyzed by presenting data on frequency, mean and standard deviation.

Results

The results of the study discussed the demographic characteristics of the patient, the level of self-care and the self-care domain. Most of the categories of respondents in this study were in the age range > 45 years (48%), the most gender was female (60%), with the highest level of education senior high school (64.2%), and the highest salary of <2 million rupiah (Table 1).

Demographic data	n	%
Age		
Teenagers (< 25 th)	15	15.8
Adult (25 th – 45 th)	34	35.8
Elderly (> 45 th)	46	48.4
Gender		
Female	57	60
Male	38	40
Educational level		
Junior high school	18	18.9
Senior high school	61	64.2
University	16	16.8
Salary		
< 2 million/month	41	43.2
> 2 million/ month	54	56.8

Table 1. Demographic Data Characteristics of Family CKD Patients at Hemodialysis Room, January 2020 (n=95).

Based on Table 2, it shows that the highest percentage of self-care level is wholly compensatory (47.4%), the next level is moderate compensatory (37.9%) and the lowest is support compensatory (14.7%). In the Self-Care Approach Viewed from a Family Perspective based on the Self-Care of CKD Index, it was found that all self-care domains were at the full compensation system level, namely self-care maintenance (47.4%), self-management (42.1%), and self-confidence. (42.1%) (Table 3).

Self-Care	Frequency	Percentage (%)
Wholly compensatory	45	47,4
Partial compensatory	36	37,9
Support compensatory	14	14,7
Total	95	100

Table 2. The Level of Self-Care of CKD Patients Undergoing Hemodialysis at Hemodialysis Room based on Family Perspective, January 2020 (n = 95).

Domain Self-Care	n	%	Mean	SD
Self-Maintenance				
Wholly compensatory	45	47,4%	19,56	6,872
Partial compensatory	32	33,7%		
Support compensatory	18	18,9%		
Self-Management				
Wholly compensatory	40	42,1%	13,34	5,632
Partial compensatory	16	16,8%		
Support compensatory	39	41,1%		
Self-Confidence				
Wholly compensatory	40	42,1%	19,99	9,122
Partial compensatory	17	17,9%		
Support compensatory	38	40,0%		

Table 3. Self-Care Approach Viewed from a family perspective of CKD patients Undergoing Hemodialysis at Muhammadiyah Hospital, Lamongan based on the domain in self-care of CKD index.

Discussion

The results showed that some patients with hemodialysis therapy showed a low level of dependence. Patients can still carry out self-care activities independently. This is supported by research¹¹, which showed that patients on hemodialysis were more likely to have minimal dependence. The factors affecting the self-care of hemodialysis patients are age, education level and family income. Education level and family income are the factors that are most strongly associated with the ability of self-care in managing nutritional diets in patients undergoing hemodialysis¹¹. This is because nutrition is closely related to the patient's financial ability and patient knowledge about good nutrition for patients with hemodialysis therapy.

Most patients on hemodialysis require full support in self-care. Patients with chronic diseases, such as CKD, will rely heavily on family or caregivers to meet their daily needs¹². Patients who are highly dependent will need a family or caregiver during the treatment period, both at

home and in the hospital. The role of the family / caregiver is in the form of providing support, influencing patient decision-making, guided reflection of what the patient has experienced, contextual factors that are present at the time of symptoms, and facilitating discussions about changes in future actions¹³.

Based on the mean value, CKD patients who are undergoing hemodialysis therapy have a higher self-confidence domain than the other two self-care domains. Self-care confidence is a mediator to achieve self-maintenance and self-management¹⁴. Self-care confidence is a person's ability to perform self-care tasks. The findings of this study indicate that self-care confidence is the key to successful self-care in chronic diseases¹⁴. Self-care confidence is a major determinant of self-care in patients. Therefore, doctors and other health professionals must use strategies to increase patient self-confidence¹⁴.

The lowest mean value is found in the self-care domain of self-management. The results of this study are supported by research¹⁵ which shows that of the three self-care domains, the self-management domain has the lowest percentage. Self-management is an important component of successful outpatient chronic disease management¹². Self-management is an important concept in disease control, emphasizing health guidelines that direct patients to focus on their own problems¹⁶. Patients with high self-care management will easily make decisions that will be taken during the treatment period. In contrast, patients with low self-management will need a family or caregiver role to accompany them. The role of the caregiver is not only focused on helping patient self-care, but also related to patient care management at home¹². Self-care management is closely related to the contribution of carers or families who tend to their independent care¹². Roles and family support include escorting hemodialysis patients to do self-care management including diet monitoring, stress management, safe food, exercise, good habits, shunt care, therapeutic diets and observation of care instructions¹⁷. Self-management is also a prerequisite for humans to provide health care for patients with chronic diseases¹⁶.

Most patients on hemodialysis have high self-care maintenance. This is contrary to previous research. Previous studies conveyed

the largest adequate self-maintenance compared to other domains¹⁵. Self-care maintenance refers to behaviors that aim to maintain the stability of their health¹² and improve patient wellbeing¹⁴. These behaviors include taking medication as prescribed, adhering to a diet, and monitoring symptoms¹². Factors that influence self-care are physical and emotional quality of life, comorbidity, ADL disorders, cognition, number of hospitalizations, quality of patient-caregiver relationships, gender of caregivers, and social support for caregivers¹².

The results of this study imply that patient self-management needs to be improved. High self-management will increase the independence of patients with chronic diseases in caring for themselves. The family role is a vital part in improving patient self-management. Families can facilitate and supervise diet, exercise, and healthy living behaviors. The motivation provided by the family can provide psychic support and emotional support. Nurses can monitor the patient's self-management through the patient's physical condition. Health education provided by nurses will be able to change the knowledge and behavior of the patient. Health education should be given repeatedly so that patients are aware of the importance of changing lifestyles to be healthier. This study was only conducted on CKD patients undergoing hemodialysis, so it cannot represent self-care of CKD patients who do not undergo hemodialysis.

Conclusions

The ability of CKD patients to perform self-care while at home shows low dependence. Patients can still carry out self-care activities independently. Some CKD patients have greater self-maintenance than other self-care domains. Most patients in Indonesia have extended family structures that can provide more emotional support, awards and information, which will increase the patient's independence and trust in taking care of themselves. The role of the family is very big in caring for CKD patients at home. The family becomes the patient's support system, both in care management, making decisions related to patient care, and changing the patient's lifestyle.

Declaration of Interest

There is no conflict of interest.

References

1. Pickens, J. M. *Self-Care, Nursing Theory, and Evidence-Based Practice*, by S. G. Taylor and K. Renpenning. (New York: Springer, 2011). *Nursing Science Quarterly*; 2013; 26(3): 292–293.
2. Naghavi, M. et al. Global, regional, and national age-sex specific all-cause and cause-specific mortality for 240 causes of death, 1990-2013: A systematic analysis for the Global Burden of Disease Study 2013. *Lancet*; 2015; 385(9963): 117–171.
3. PERNEFRI. Simposium Peningkatan Pelayanan Hemodialisis, Penyakit Ginjal dan Aplikasi Indonesian Renal Registry Joglosemar 2012. PERNEFRI; 2013.
4. Riset Kesehatan Dasar (Riskesmas). Laporan Nasional RISKESDAS 2018. Badan Penelitian dan Pengembangan Kesehatan Kementerian RI; 2018; 2018: 169.
5. Sturgill, D. & Bear, A. Unique palliative care needs of patients with advanced chronic kidney disease - The scope of the problem and several solutions. *Clinical Medicine. Journal Royal College Physicians London*; 2019;19(1): 26–29.
6. Alnazly, E. K. The impact of an educational intervention in caregiving outcomes in Jordanian caregivers of patients receiving hemodialysis: A single group pre-and-post test. *International Journal of Nursing Science*; 2018; 5(2): 144–150.
7. Guerriere, D., Husain, A., Zagorski, B., Marshall, D. & Seow, H. Predictors of caregiver burden across the home-based palliative care trajectory in Ontario, Canada. *Health and Social Care in the community*; 2016; 24(4): 428–438.
8. Faridah, V. N. et al. Determinants of the caregiver burden of ckd patients undergoing hemodialysis. *International Journal of Psychosocial Rehabilitation*; 2020; 24(7): 7628–7634.
9. Ferrell, Betty R, Kravitz, Kate, et al. Family Caregivers: A qualitative study to better understand the quality-of-life concerns and needs of this population. *Clinical Journal of Oncology Nursing*; 2018; 22(3): 286–294.
10. Riegel, B., Jaarsma, T., Lee, C. S. & Strömberg, A. Integrating Symptoms Into the Middle-Range Theory of Self-Care of Chronic Illness. *Advances in Nursing Science*; 2019; 42(3): 206–215.
11. Hermawati. Faktor-Faktor Yang Mempengaruhi Self Care Diet Nutrisi Pasien Hemodialisa Di Rsud Dr. Moewardi Surakarta. *Gaster Jurnal Ilmu Kesehatan*; 2016; 14(2): 38–49.
12. Bidwell, J. T. et al. Determinants of Heart Failure Self-Care Maintenance and Management in Patients and Caregivers: A Dyadic Analysis. *Research in Nursing and Health*; 2015; 38(5): 392–402.
13. Sethares, K. A. & Asselin, M. E. The effect of guided reflection on heart failure self-care maintenance and management: A mixed methods study. *Heart and Lung Journal of Acute and Critical Care*; 2017; 46(3): 192–198.
14. Massouh, A. et al. Self-care confidence mediates self-care maintenance and management in patients with heart failure. *Heart and Lung*; 2019; 49(1): 1-6.
15. Cené, C. W. et al. Self-care confidence mediates the relationship between perceived social support and self-care maintenance in adults with heart failure. *Journal of Cardiac Failure*; 2013; 19(3): 202–210.
16. Lee, M. C., Wu, S. F. V., Hsieh, N. C. & Tsai, J. M. Self-Management Programs on eGFR, Depression, and Quality of Life among Patients with Chronic Kidney Disease: A Meta-Analysis. *Asian Nursing Research (Korean Society of Nursing Science)*; 2016; 10(4): 255–262.
17. Wijayanti, D., Dinarwiyata, D. & Tumini, T. Self Care Management Pasien Hemodialisa Ditinjau Dari Dukungan Keluarga Di Rsud Dr.Soetomo Surabaya. *Jurnal Ilmu Kesehatan*; 2017; 6(1): 109-117.